

An aerial view of the Teatro Eslava stage and audience seating. The stage is illuminated with purple light, and the audience seating is arranged in a semi-circle. The text "TEATRO ESILAVA" is overlaid in the center of the image.

TEATRO
ESILAVA

Past. Present. And a lot of future.

Since we first opened our doors to the public **150 years ago**, we have never stopped changing.

And, at the same time, we have never changed (we are still the same).

We have been a café. A variety hall. A theatre. A concert hall... We have been a television set.

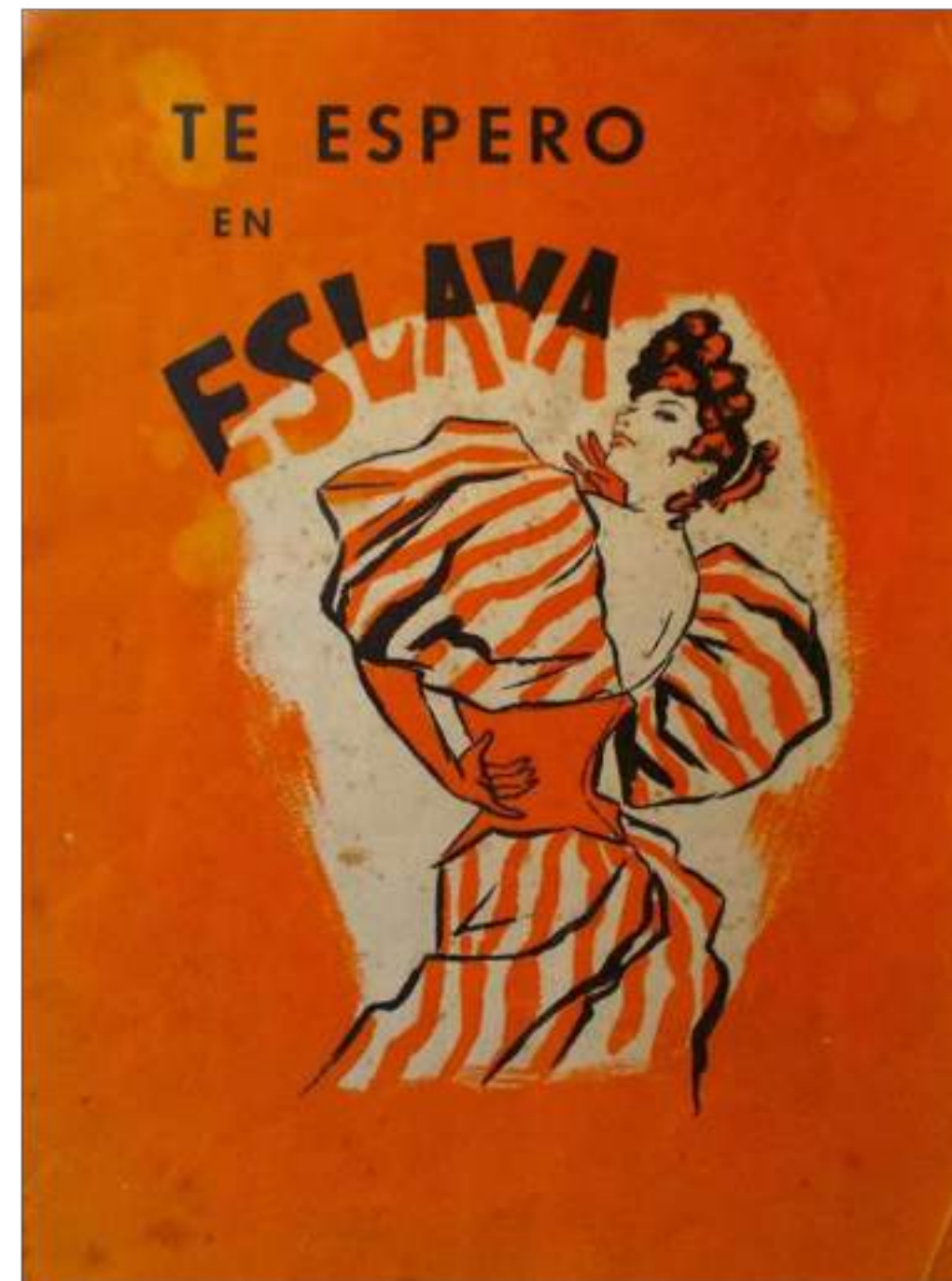
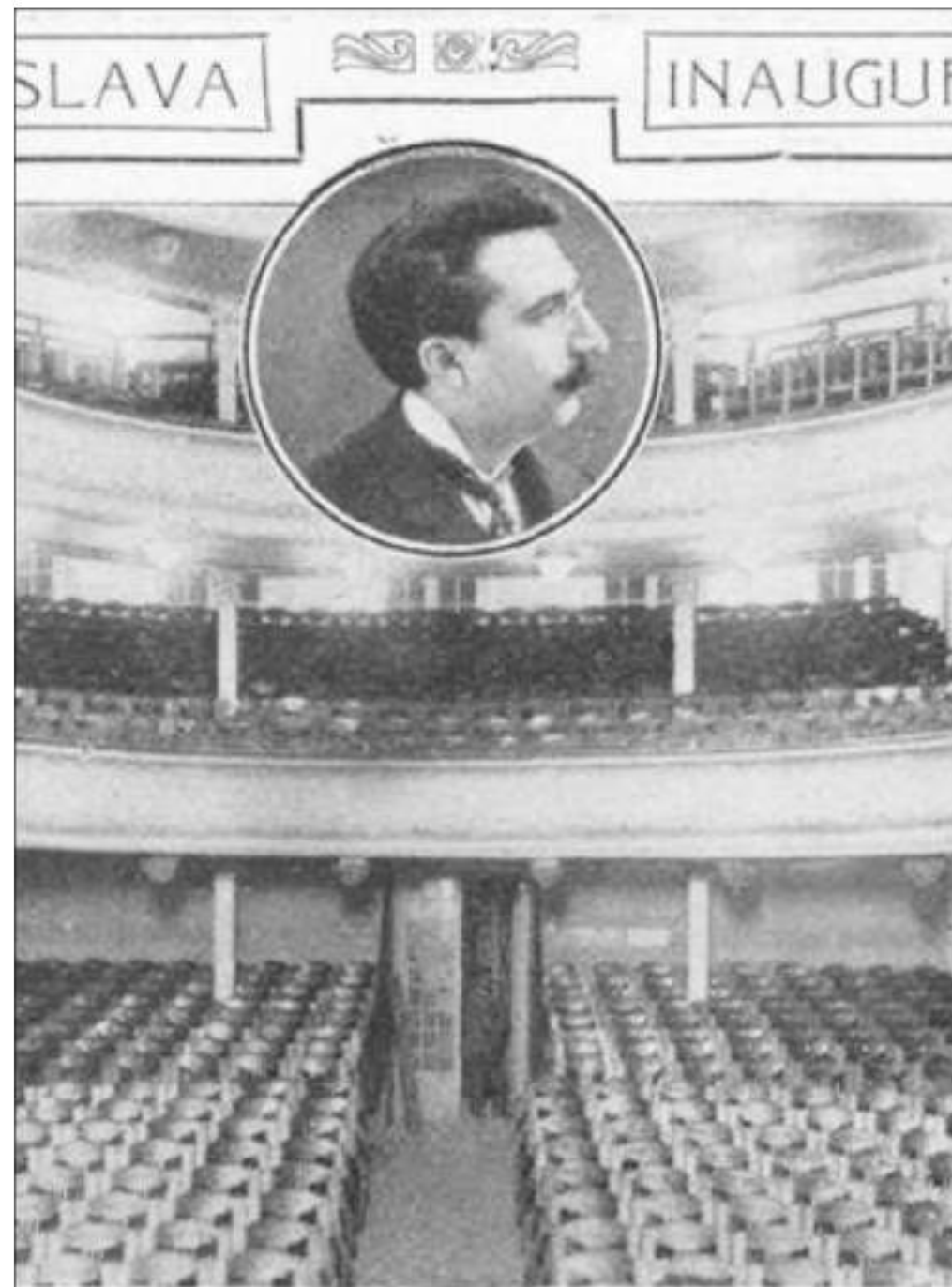
But, above all, we have been the soul of Madrid night life. And, as happens with the great legends, for a time we were known by our surname: Joy.

La Joy.

We have been everything worth being. And always with the same vision: **to offer the best.**

Today, in the present, we have the same objective: to continue offering **the best experiences in the capital.**

Experiences that will still be talked about in another 150 years.





The/A vision that changed our world.

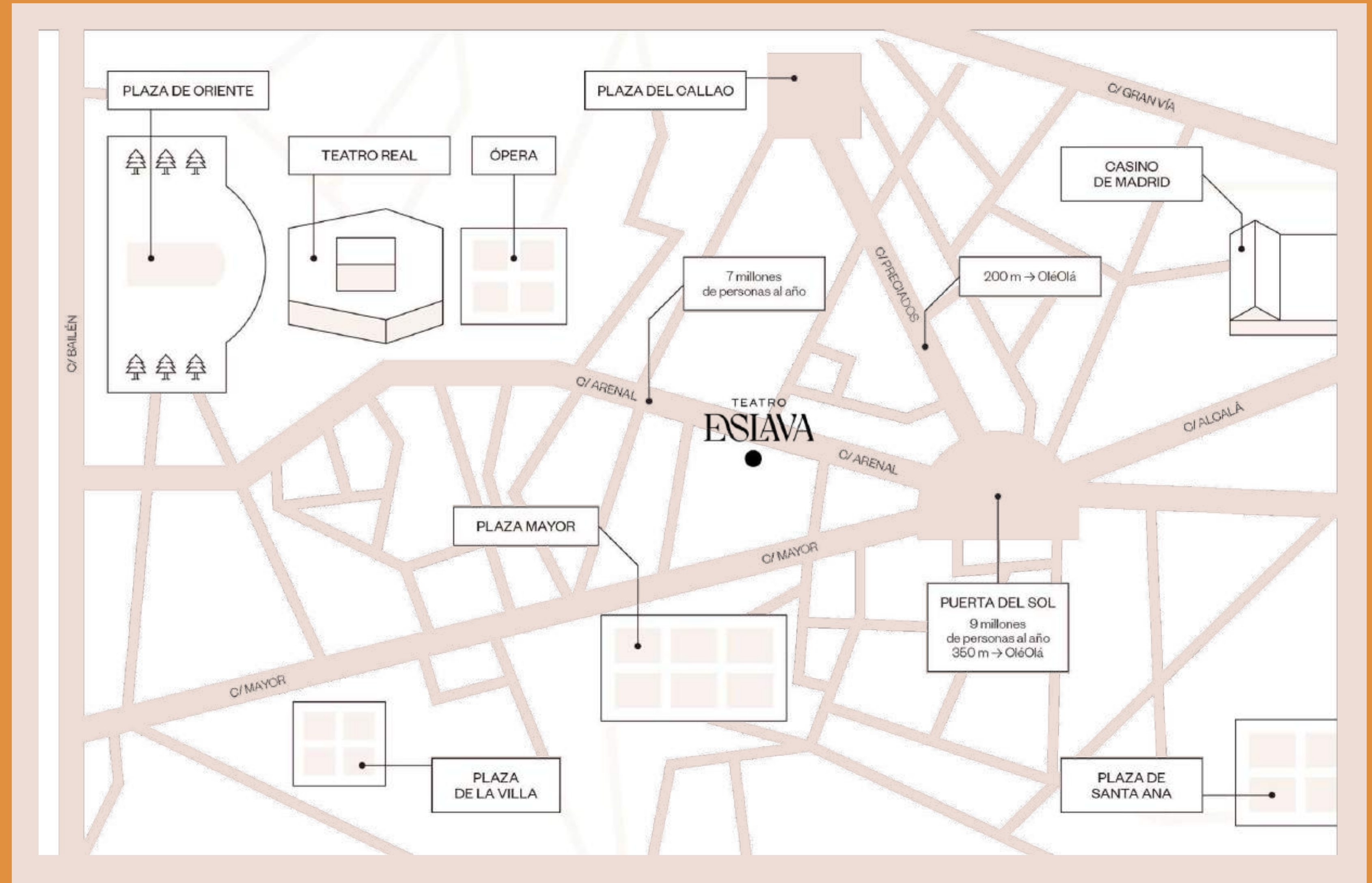
Philippe Starck is responsible for giving our Eslava Theatre a new skin, for inspiring every corner with his unmistakable surreal and timeless style, a blend of our authentic roots and the sophistication of an unforgettable experience.

Like us, a restless mind, sometimes misunderstood, full of contrasts and nuances, of mud and gold, of light and night, from the most traditional to the most surprising.

The Soul of Madrid, in the heart of Madrid.

The Eslava Theatre is located in Calle Arenal, the nerve centre of Madrid:

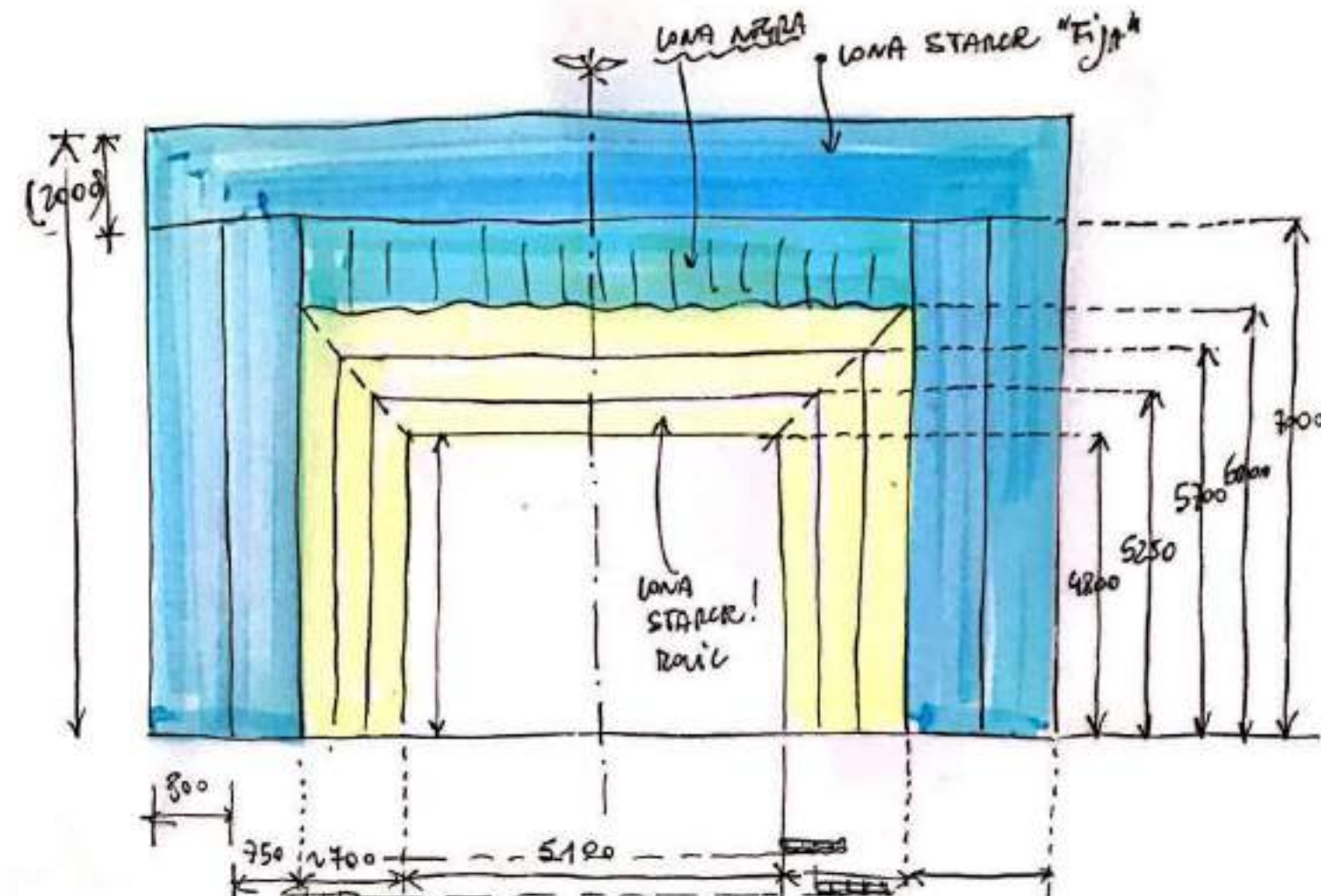
- 2 min. walk from Puerta del Sol.
- 3 min. walk from Plaza Mayor.
- Next to the Teatro Real, Gran Vía or Plaza de Oriente.
- About 15 minutes walk from the Museum area (Prado, Thyssen-Bornemisza).



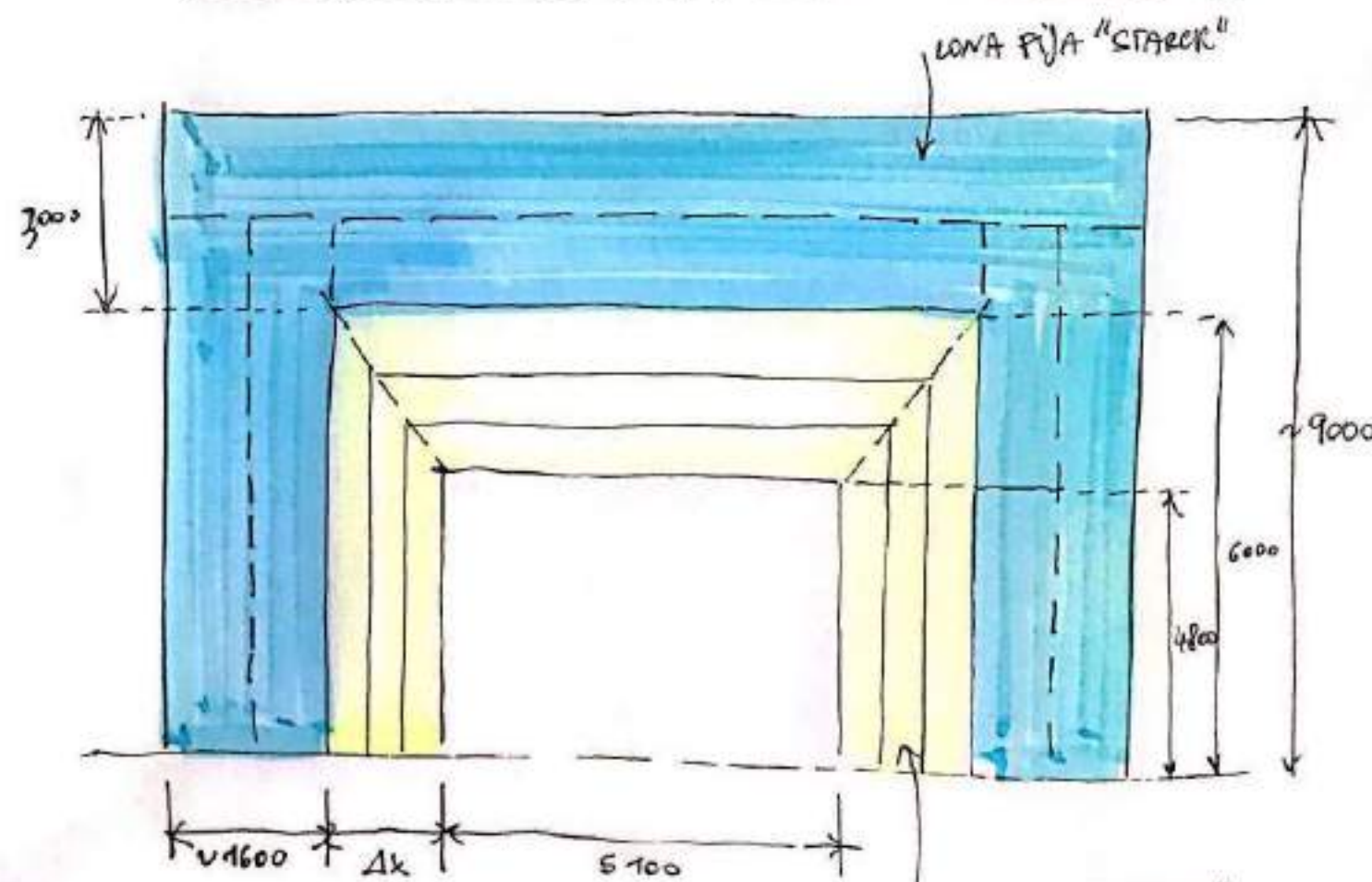
A doorway to another dimension.

Ruling over the space is the place where it all happens: our stage. The axis from which the magic arises and through which emotions enter and leave.

Our stage is dominated by a door that leaves no one indifferent, thanks to its **4 arms with more than 400m² of motorised screens.**



ACTUAL
(A)



PROPUESTA
(B)
LONAS STACER
(Fija - Movil)

MISMO TAMAÑO
QUE LAS PANTALLAS



LOCOMIA







LaLiga Santander

LaLiga SmartBank

LO DE LO
RESU DE LO

LaLiga

LaLiga

Planta 0

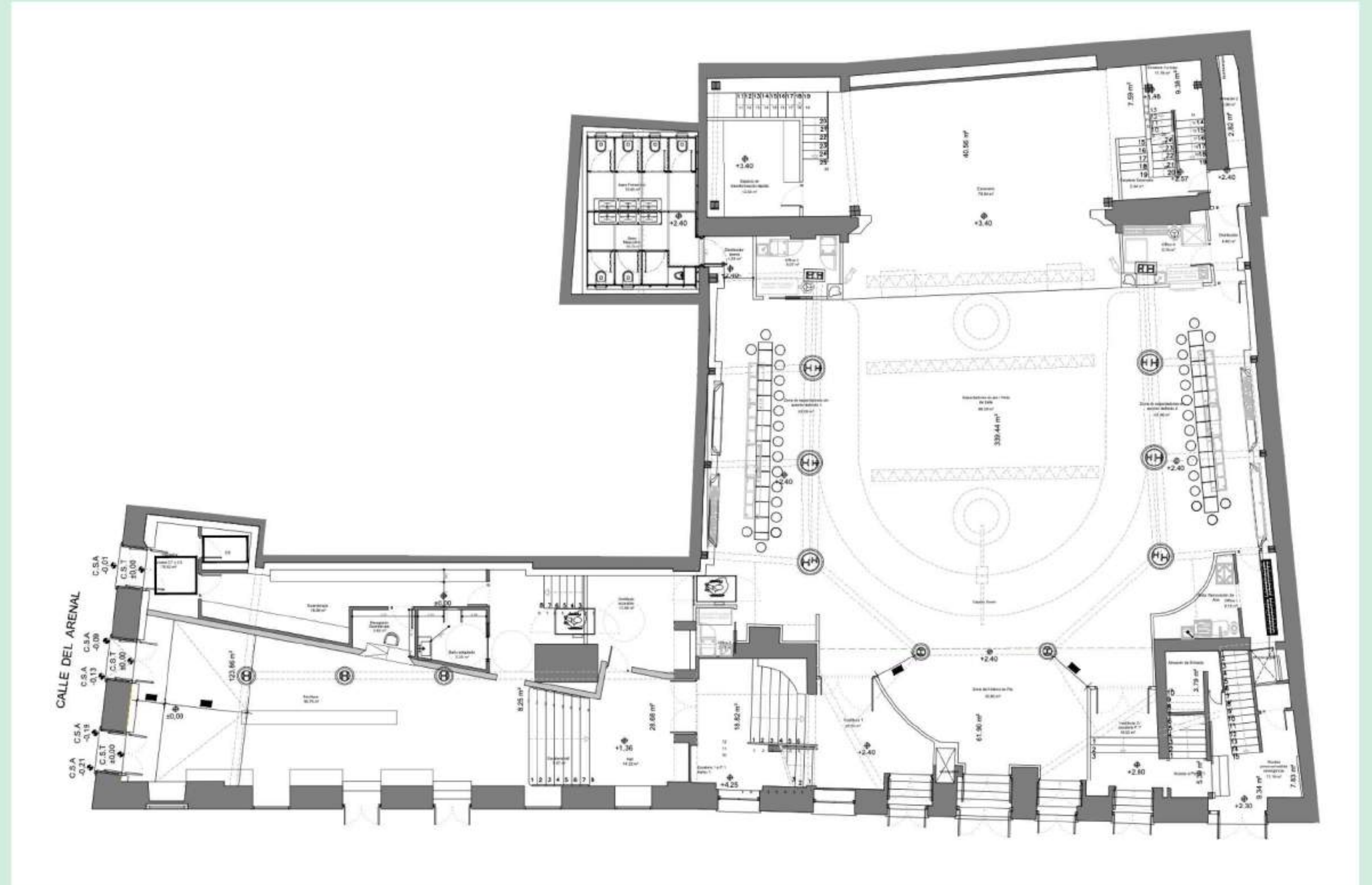
The Eslava Theatre has 3 floors open to the public with a total capacity of:

- **Planta 0:**

120 people seated for lunch/dinner.

250 people in theatre.

500 people at cocktail party.



DISABLED ACCESS.
GUARDROBE.





original M+
LOCOMIA
M+

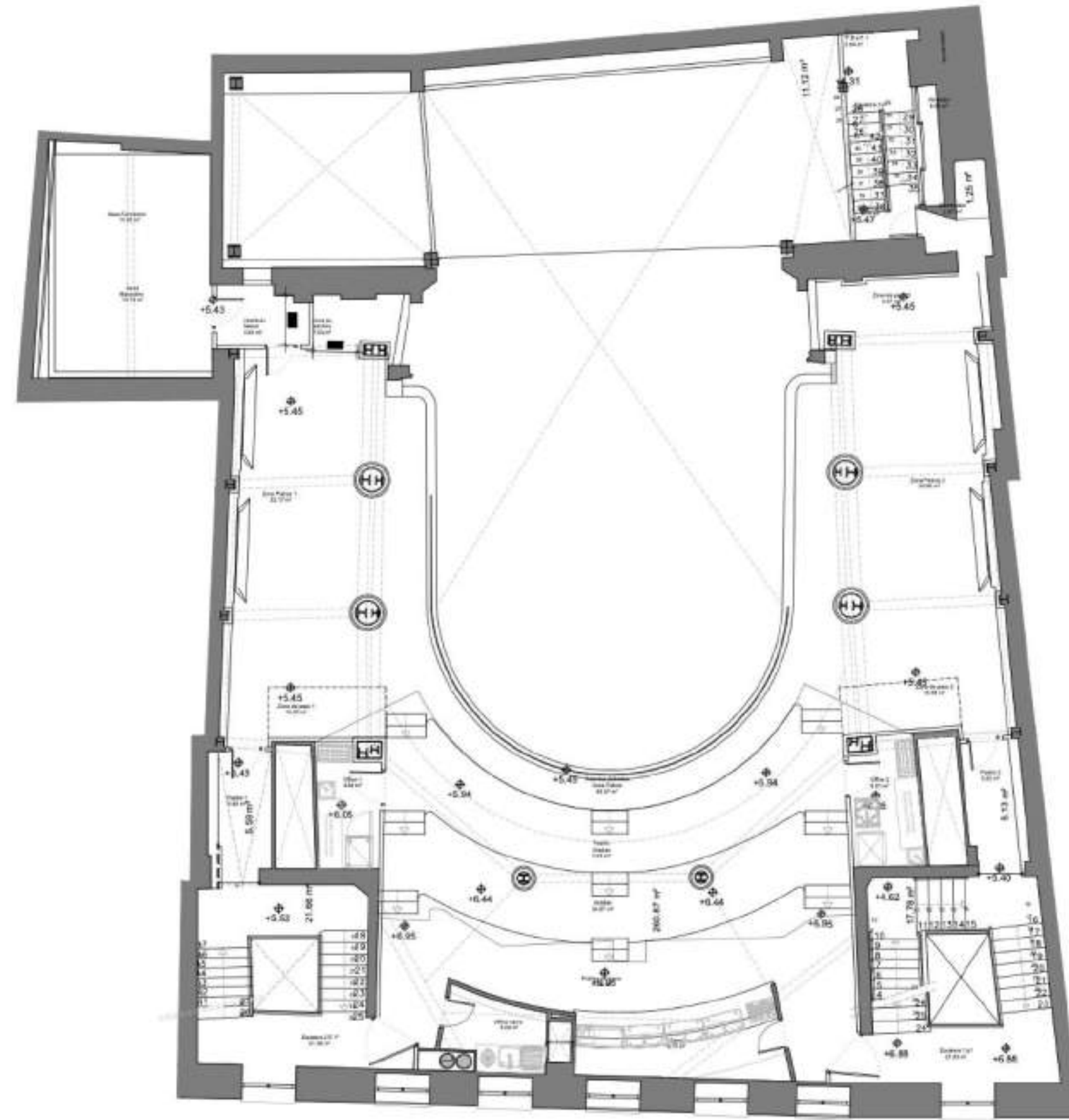


Planta 1

- Planta 1:

80 people seated.

300 people at a cocktail party.







Large format LED screen on stage.

8 mirror screens in each box.

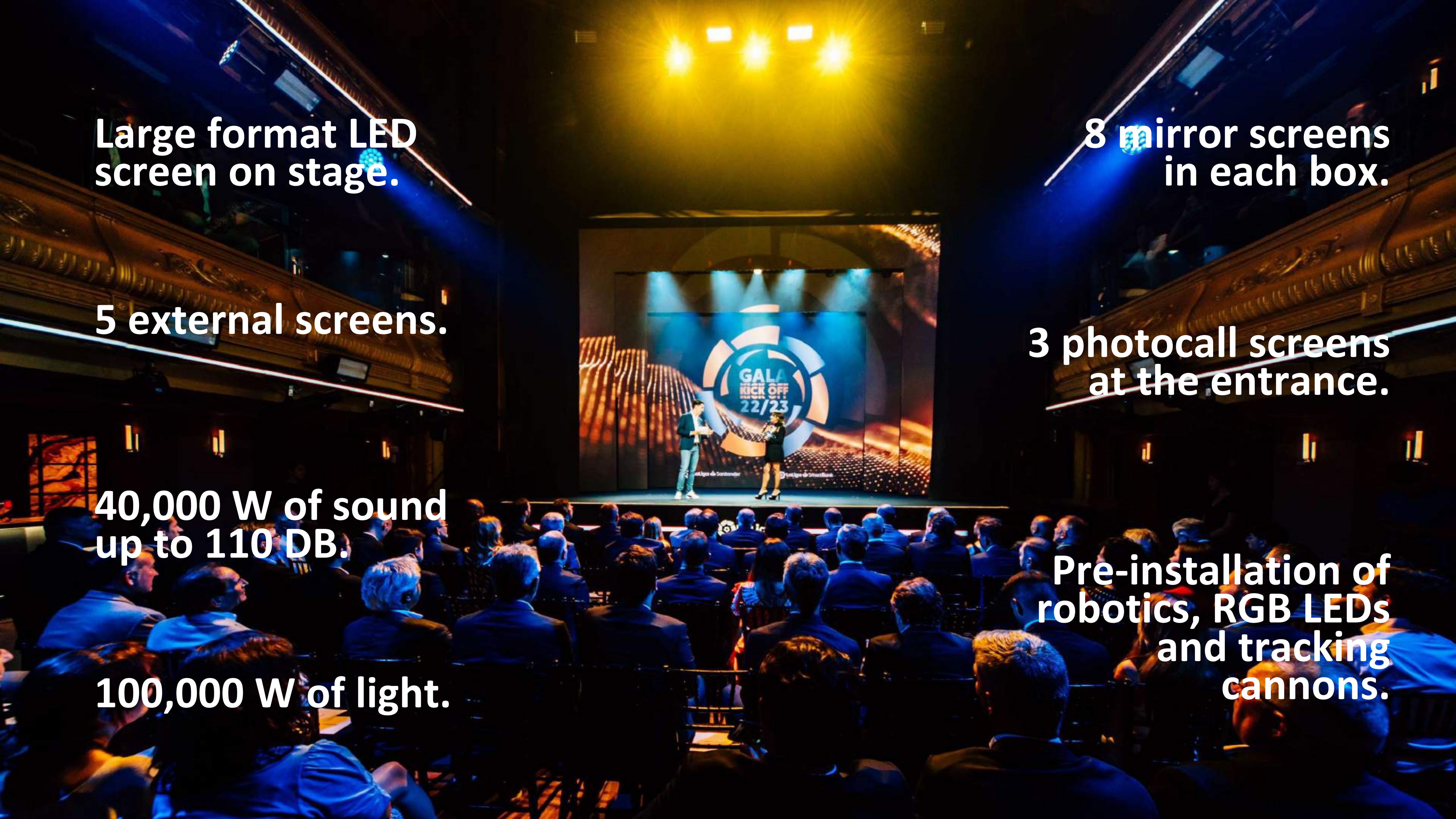
5 external screens.

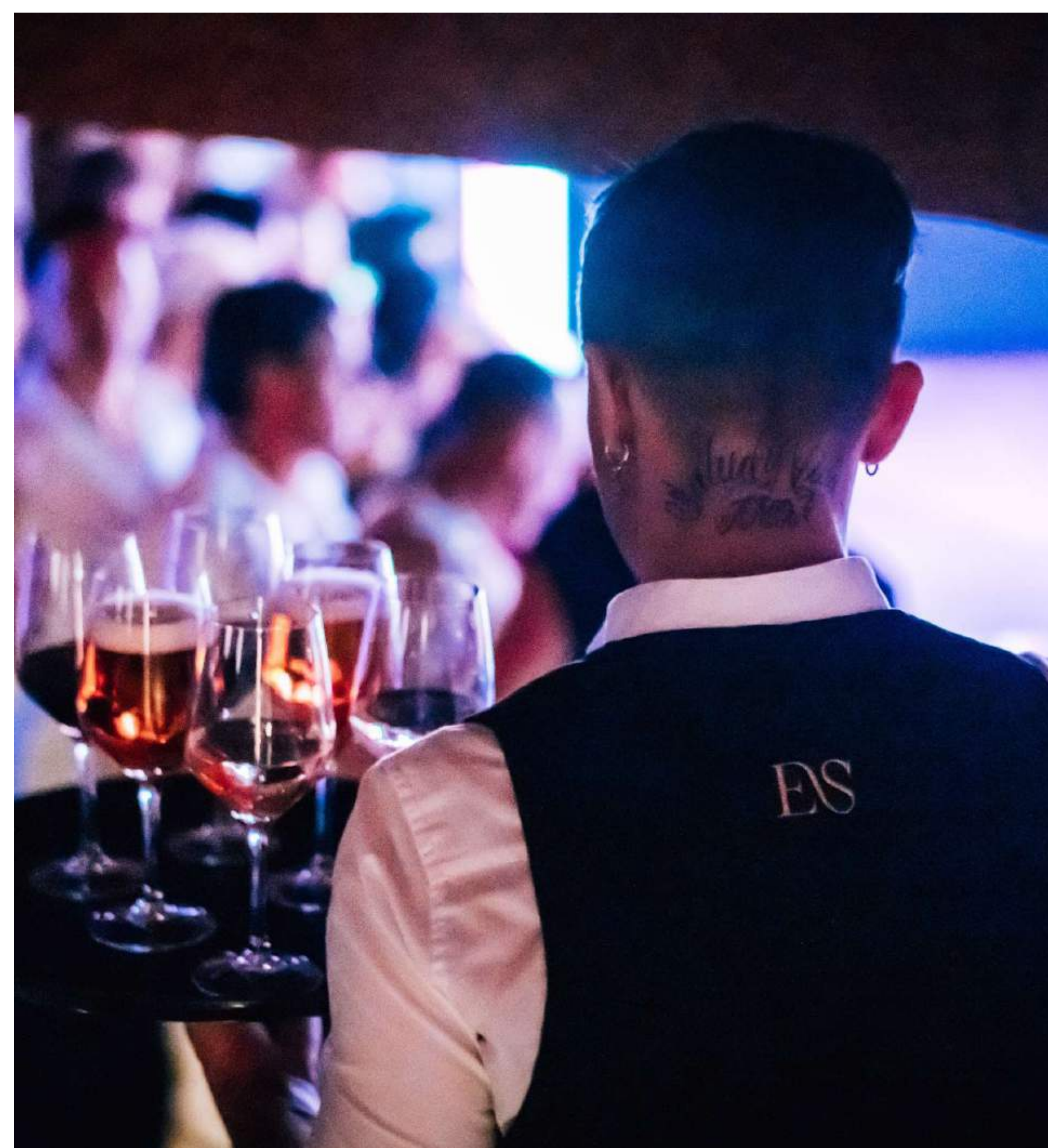
3 photocall screens at the entrance.

40,000 W of sound up to 110 DB.

100,000 W of light.

Pre-installation of robotics, RGB LEDs and tracking cannons.





The best experiences of the capital.

A unique building. A unique history. A unique refurbishment carried out by a unique character... the experiences that are lived inside Teatro Eslava, thanks to our catering and our experience managing large numbers of people, are also unique.





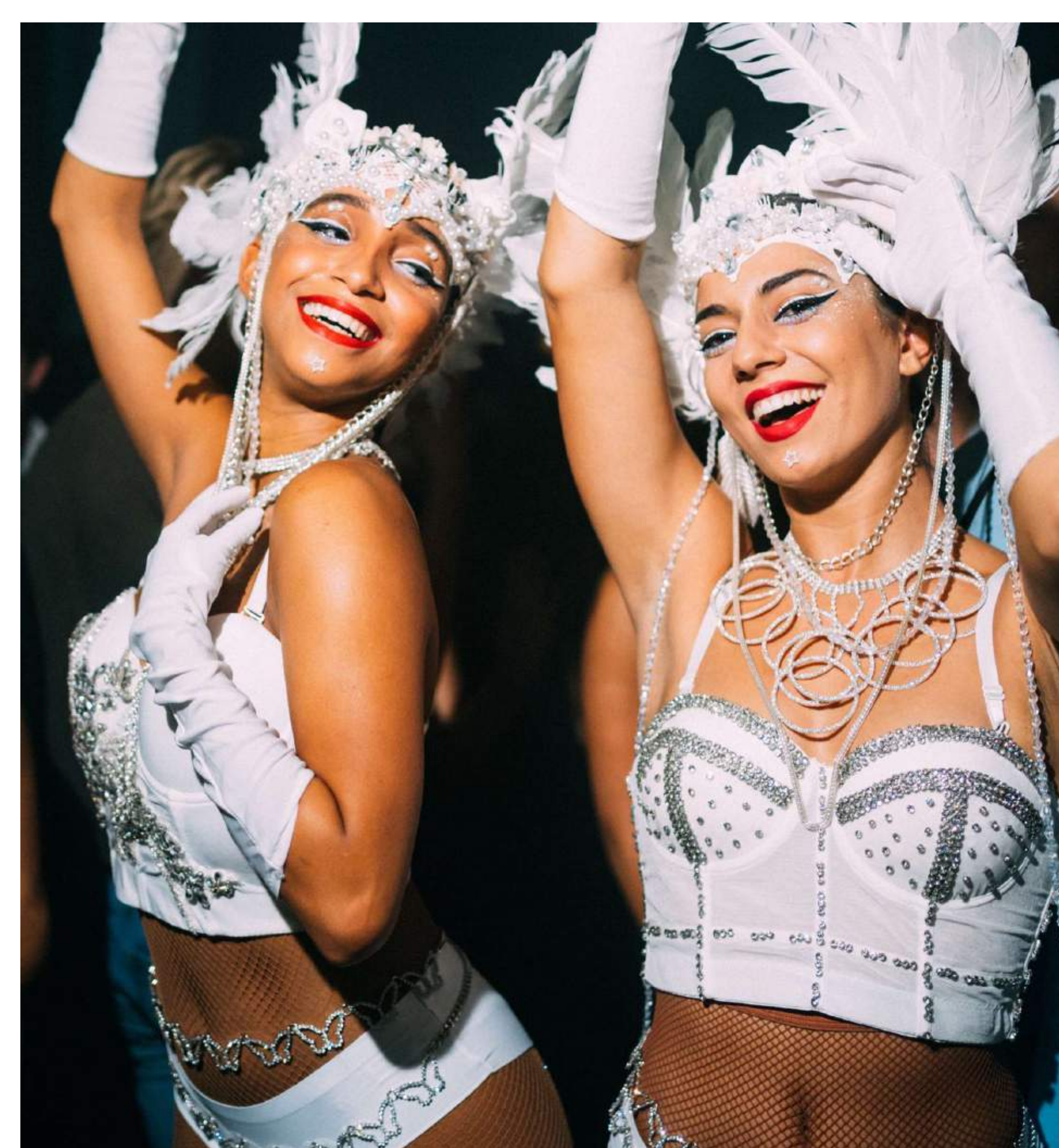




With the skin of Joy.

We were born as a symbol of freedom. Since then, known as 'JOY', we have been an icon of the nightlife in the city of Madrid, being part of our most cultural history.

Today Teatro Eslava picks up the soul of Joy and becomes a new experience to enjoy in our capital. An experience for those who believe that the night is not a place, but an attitude.



Own production of shows.

With Inés Delicious Artistic Direction, shows become reality at Teatro Eslava. Our own cast of dancers, costumes and tailor-made proposals can create any play, show or performance based on a briefing from the client.

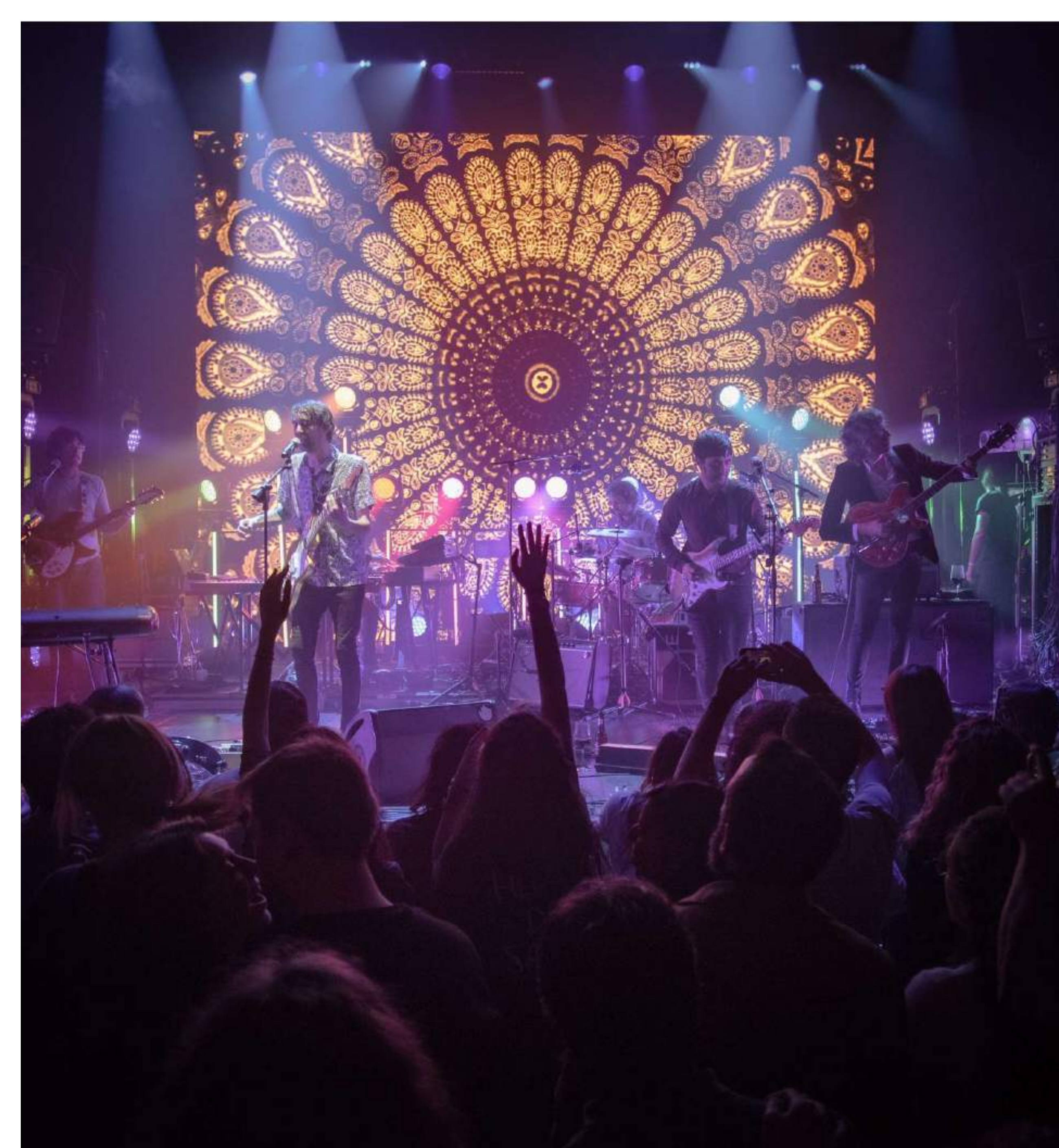






Concerts.

We are a space in which to experience the best of our art, of those notes that so easily bring us to our feet and make us vibrate, that run freely through our veins. A space that lights up with music when the lights go out, and with tradition and sophistication as our background, the notes that light up our souls burst forth. A bridge between our past and our present.



INDIE

POP

AMERICANA

SOUL

FLAMENCO

URBANA



OLÉOLÁ

FLAMENCO CONTEMPORÁNEO
& TAPAS DINNER

Contemporary Flamenco & Tapas Dinner.

If Teatro Eslava is the result of mixing the soul of different sources, OLÉOLÁ has continued with tradition.

A show, which is a musical, that incorporates theatre... and which, throughout its more than two hours, narrates the history of flamenco; from its origins to the avant-garde.

The light of the Broadway spotlights intermingles with the shadows of the caves of the Albaicín, resulting in a show that is unique in the world.

And to accompany it, an equally unique dinner: a selection of the best Spanish tapas of exceptional quality.



The flamenco's art of Cristina Hoyos.

From the hand of **Cristina Hoyos**, one of the great names in flamenco and culture in this country, and **José Carlos Plaza**, a reference on the stage with several national theatre awards, you can experience a staging of the best contemporary flamenco there is.

An emotional, funny, intense and brilliant show. Authentic and natural, without eccentricities. With a lot of art. With "duende". That word that cannot be explained but, when you come, you can feel it.



Eslava's flavour.

Aromas and flavours that make our land unique and special, a benchmark of quality gastronomy admired the world over.

An unrivalled gastronomic experience, finding excellence and versatility in our menus.

A unique proposal that also takes care of what is ours: because more than 70% of the ingredients we use are from local suppliers, reducing our carbon footprint, while promoting the local rural environment.



Who have we met in Teatro Eslava...?

Δ T L Δ N T I X Δ
FILMS

ADEFAM

amazon music

fotocasa Pro

Dezigual®

Fotogramas

Fremantle

Grant Thornton

GBS
Finance

RollingStone

JLL

LaLiga

MADRID
CONVENTION
BUREAU

Madrid
Film Office

TimeOut

morenafilms

movistar

SONY MUSIC

V-Valley

BERIN
IGLESIAS
ART
-CREATIVE ENTERTAINMENT GROUP-

TEATRO
ESLAVA

Desigual.
X
NATHY PELUSO

Desigual®
BY NATHY PELUSO



TEATRO
ESLAVA

Desigual
BY NATHY PELUSO

Desigual[®]
BY NATHY PELUSO

TEATRO
ESLAVA



RollingStone

TEATRO
ESLAVA

ROLLINGSTONEESPANOL

ARDE
BOGALAS

RollingStone



TEATRO
ESLAVA



TEATRO
ESLAVA

LO DE LO

RESUMEN DE TEMPORADA



LaLiga



TEATRO
ESLAVA



amazon music



amazon music

TEATRO
ESLAVA

amazon music



TEATRO
ESLAVA

amazon music



Edurne



amazon music



TEATRO
INSTA



original M+
FÁCIL
UNA SERIE DE
Anna R. COSTA

TEATRO
ESLAVA



original **3+**
FÁCIL
UNA SERIE DE
Anna R. COSTA

TEATRO
ESLAVA

original **3+**
FÁCIL
UNA SERIE DE
Anna R. COSTA

TEATRO
ESLAVA

LOCOMIA original M+

EL MAYOR CULEBRÓN JAMÁS BAILADO



LOCOMIA

TEATRO
ESLAVA



LOCOMIA

TEATRO
ESLAVA



LOCOMIA
EL MENAJE DE CHRONOCRONIA
LOCOMIA
M+

LOCOMIA

TEATRO
ESLAVA



MADRID
CONVENTION
BUREAU

TEATRO
ESLAVA



MADRID
CONVENTION
BUREAU




TEATRO
ESLAVA



V-Valley



 V-Valley

TEATRO
ESLAVA

CONTACT

Silvia Villanueva

eventos@teatroeslava.com

+34 666 843 427

Marta Villegas

eventos2@teatroeslava.com

+34 630 988 434